

Color Selection



deko FireSafe® laminate panels are certified according to national and international requirements of building material class A. deko FireSafe® is also offered as a laminate in conjunction with certified building material panels, thus enabling complete solutions for the highest fire protection requirements.

deko FireSafe® building materials as a laminate:

Fire protection class EN13501-1

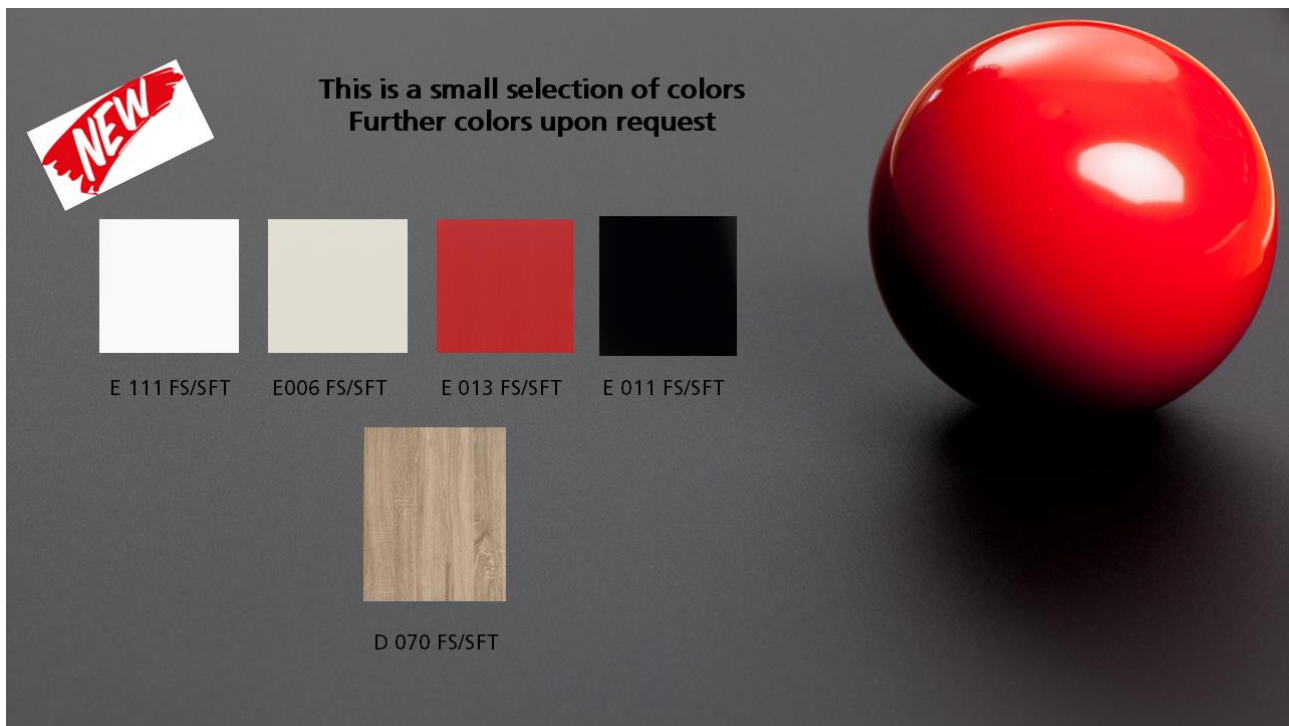
A2-s1-d0 ASTM 84 FSI 5 SD 15

UL94 V-0

PATENT No. 10 2014 116 984

dekolor decors (Uni) A2, B, C, D

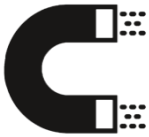


deko FireSafe[®] in following surface finishes:**HGL** (high gloss)**MAT** (mat)**MPM** (miniperl mat)**SFT** (softtouch + supermat)

dekopin-decors – magnetic HPL A2, B, C, D



MH/A341/SR



*MAT = beamer friendly
(bright colors)
**AGT = anti fingerprint
anti ghosting
dry cleaning
beamer friendly



MH/A350/SR



MH/A356/SR



MH/E006
HGL/MAT*/AGT**/MPM/SMT



MH/E011
HGL/MAT*/AGT**/MPM/SMT



MH/E110
HGL/MAT*/AGT**/MPM/SMT



MH/E111
HGL/MAT*/AGT**/MPM/SMT

Classified acc. DIN 13501-1
A2 s1 d0 as composite
Patent No. 10 2014 116 984

starline decors/ i-Resist HPML A2, B, C, D



A350/SR



A356/SR



A341/SR



A470/HSR***



A471/HSR***



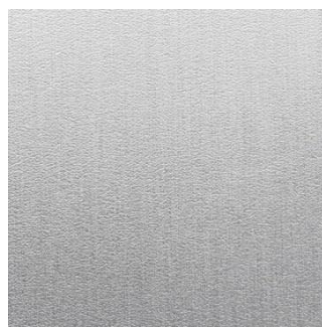
A472/HSR***



A473/HSR***



A476/HSR***



A480/HSR***



A486/HSR***

*** can also be used horizontally

SR	Scratch Resistant	Abrasion resistant >1,2 N
HSR	High Scratch Resistant	Highly abrasion resistant > 3,0 N

Formate / Sizes:

2440 x 1220 mm

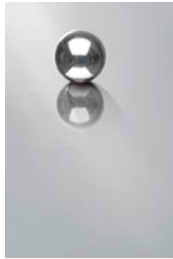
3050 x 1220 mm

Stärken / Thicknesses:

0,6 mm

1,2 mm

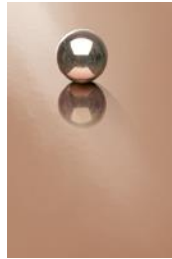
starline decors / HPML B-Classes A1, A2, B, C, D



RA210



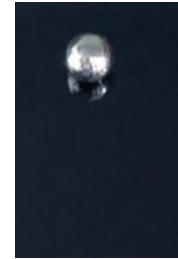
RA211



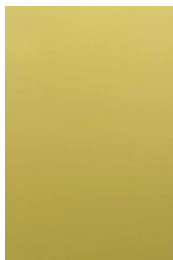
RA212



RA216



RA217



RA231



RA232



RA233



RA234



RA236



RA242



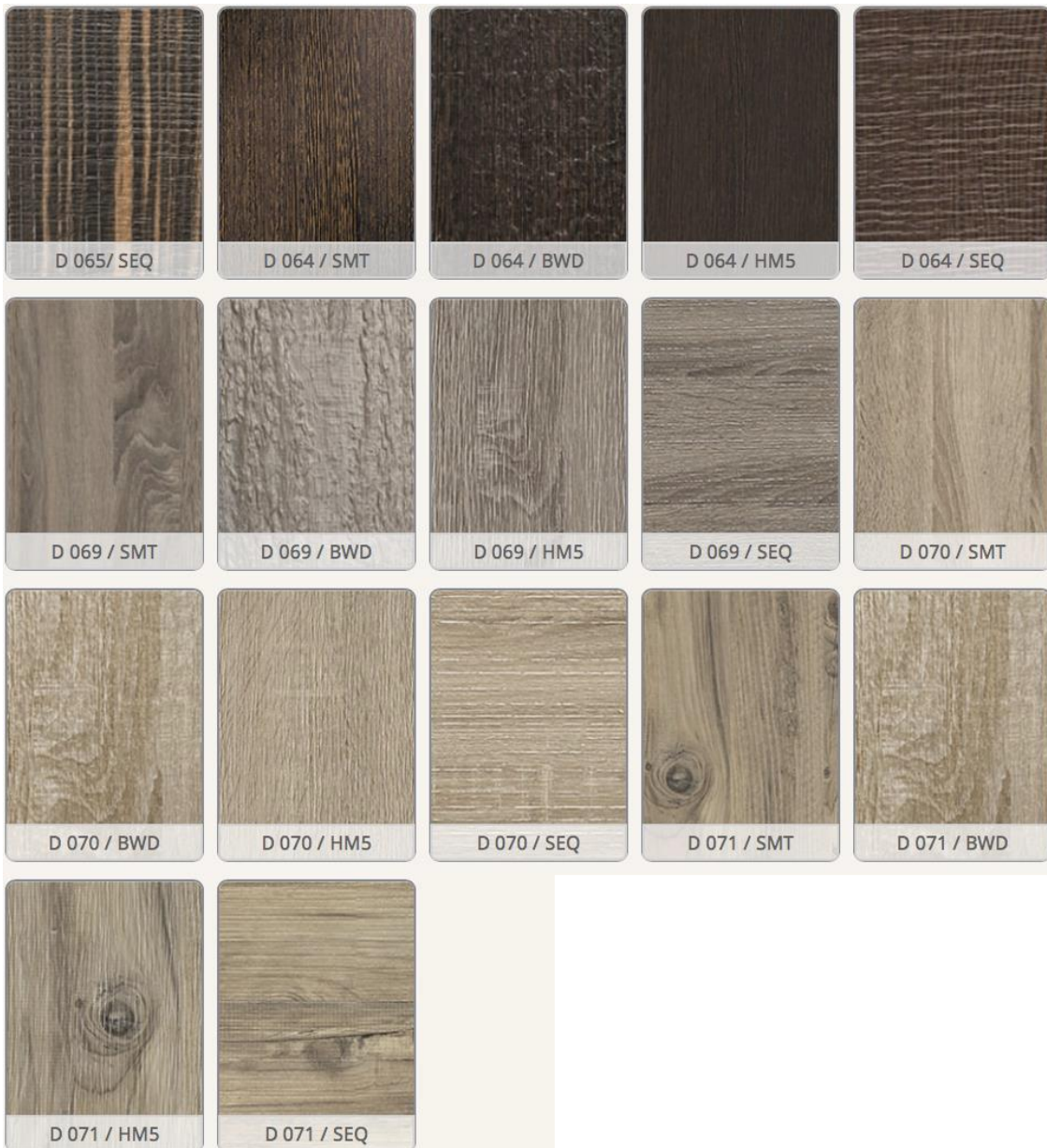
RA248



RA249

dekonova decors A2, B, C, D

(Fantasy, wood and stone decors)



Formate / Sizes:

2440 x 1220 mm
3050 x 1220 mm

Stärken / Thicknesses:

0,6 mm
1,2 mm

dekonova Fantasy, wood and stone decors

A2, B, C, D



D072



D073



D074



D075



D079



D080



D081



D083

Formate / Sizes:

2440 x 1220 mm

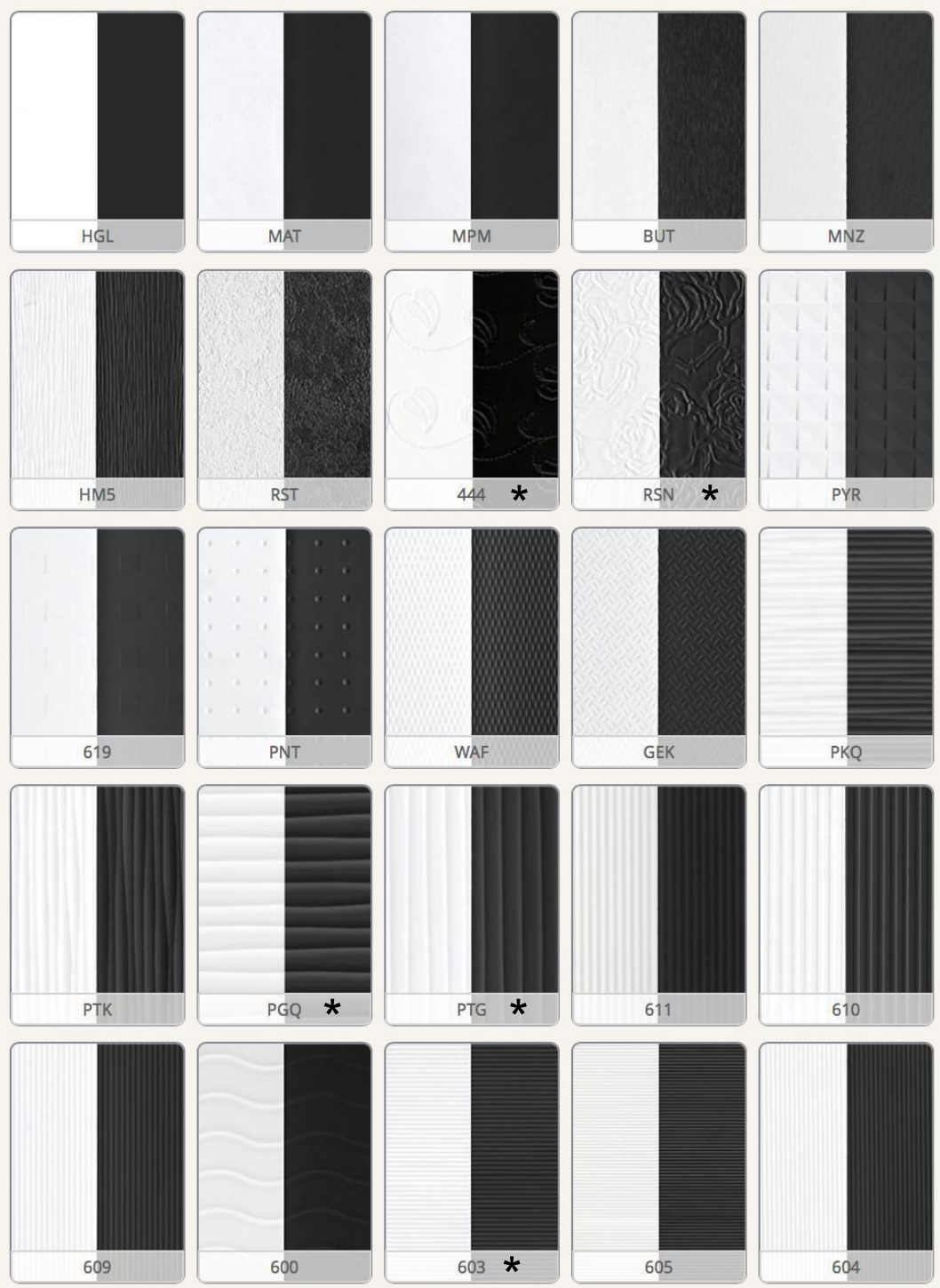
3050 x 1220 mm

Stärken / Thicknesses:

0,6 mm

1,2 mm

Structure variants metal and melamine





Formate / Sizes:

2440 x 1220 mm
3050 x 1220 mm

Stärken / Thicknesses:

0,6 mm
*1,2 mm